



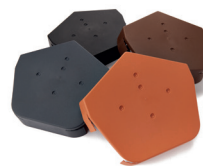
DRY FIX VERGE SYSTEM INSTALLATION GUIDE



VERGE UNITS



HALF ROUND RIDGE CAP

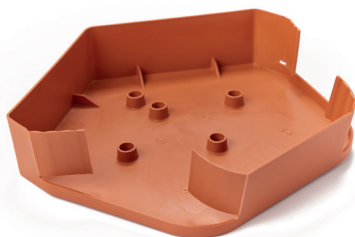


ANGLED RIDGE CAPS

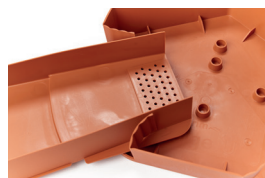
BLANKING PLATE



STARTER UNIT



Our high quality, UV stable Ridge Caps incorporate unique and innovative Flap Cap Technology. Flexible flaps contour around the sides of the Verge Unit system effectively creating a 'sealed' unit that prevents water ingress and infestation.



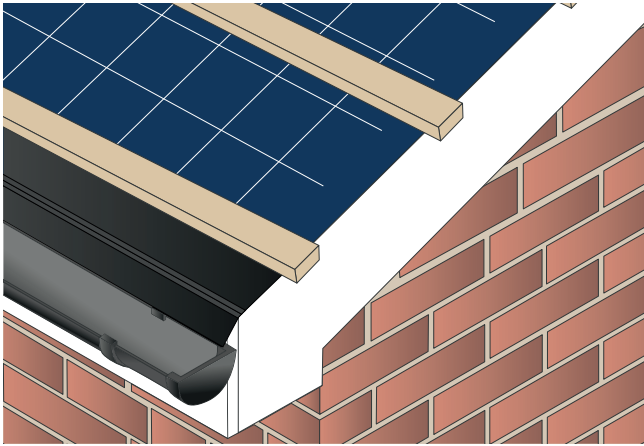
| | CONCRETE TILES | SLATES |
|------------------------------|----------------|--------|
| VERGE UNITS COMPATIBLE WITH: | ✓ | ✗ |

Unit 12B, Metcalf Drive,
Altham Industrial Estate,
Altham, Lancashire,
England, BB5 5TU



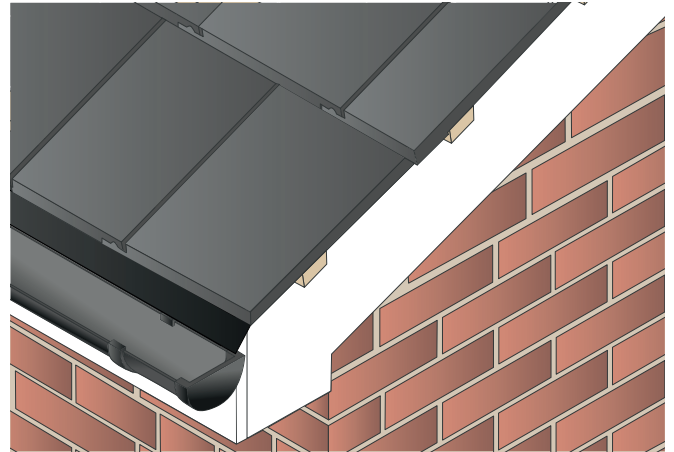
Tel 01282 930680
sales@easy-trim.co.uk
www.easy-trim.co.uk

DRY FIX VERGE SYSTEM INSTALLATION GUIDE



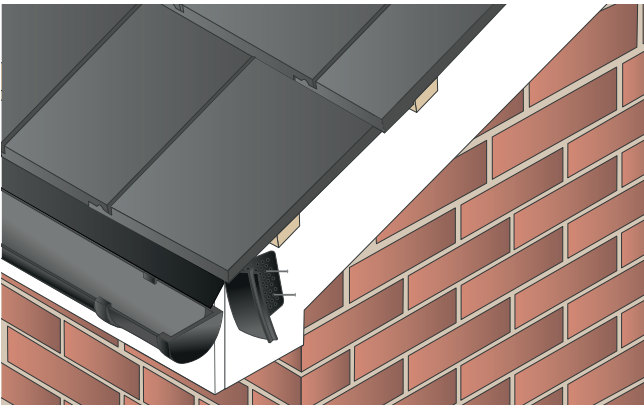
STEP 1

Install the tiling battens with a 30-50mm overhang, over the brick or barge board. Remove existing mortar bedding in refurbishment projects and install new tiling batten to the underside of the existing tiling batten.



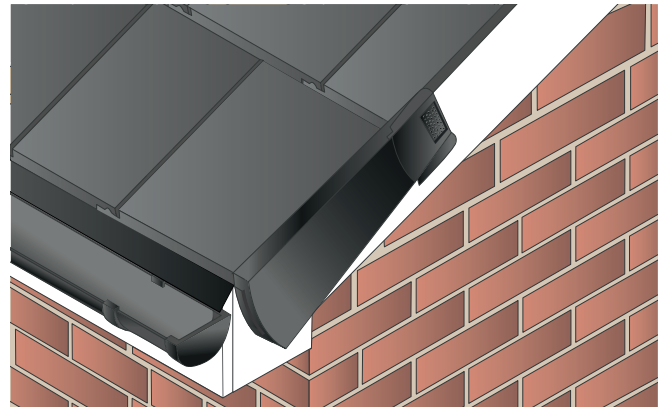
STEP 2

Lay tiles set flush with the battens. Then slide the batten end clips (not included) onto the overhanging batten ends and nail in place.



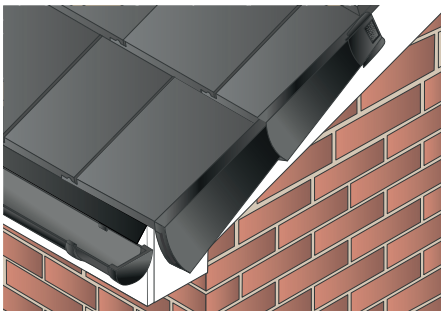
STEP 3

Snap the starter piece off the blanking plate. Starting at the bottom edge of the roof, insert the starter piece into the front end of the verge unit, and mark out the starter piece position on the fascia and barge board. Remove the unit, then mechanically fix the starter piece into position through the grid.



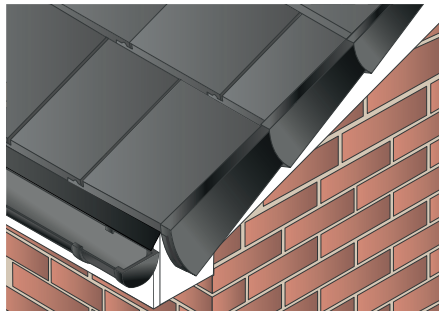
STEP 4

Slide the first verge unit over the tile at the eaves, and into the starter kit, fitting it under the head laps to ensure the unit is firmly held in place. Screw fix the unit through the top grid into the batten end clip and into the batten.



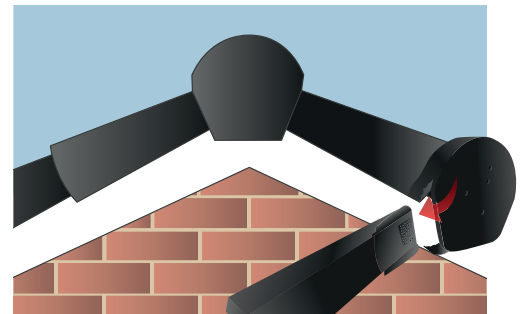
STEP 5

Slide the next verge unit into the upper edge of the first unit, press firmly to the tile, fitting it under the head laps to ensure the unit is firmly held in place and then nail the unit through the top grid into the batten.



STEP 6

Continue the process up along the barge board until you reach the ridge. If required, insert the blanking plate over the final verge nail grid to prevent water ingress and to finish off aesthetically.



STEP 7

Once you reach the ridge, insert a Ridge Cap, ensuring that the flexible flaps on the Ridge Cap contour around the outside of the Verge Unit. Screw the Ridge Cap to the ridge batten.