

# INVENTIVE

## Roof ventilation solutions

### RTV-SIS | Small Inline Slate Vent

Small Inline Slate Vent to enable ventilation directly into a roof space or connect to a ducted ventilation system

#### Uses

- On roofs with Natural or Synthetic Slates
- Enables ventilation directly into a roof space
- Can also be connected to a ducted ventilation system inside the building

#### Features and Benefits

- Suitable for roofs with a minimum pitch of 22.5°
- Free ventilation area of 9,450mm<sup>2</sup>.
- Sized to replace one slate to provide a continuous visual appearance along the roof when viewed at all levels
- Shaped to manage and channel rainwater back down onto the roof tiles and away from the vent opening
- Provides a 110mm duct connection with the optional RTV-ADIS duct adapter
- 4mm spaced external grille to prevent rainwater ingress and keep out large insects, vermin and debris
- Lightweight and easy to handle

#### Relevant Standards

- BS EN 490:2011 Concrete roofing tiles and fittings for roof covering and wall cladding - product specifications (+A1:2017)
- BS 5250: 2021 Management of moisture in buildings – Code of practice
- BS 5534:2014 Slating and tiling for pitched roofs and vertical cladding – code of practice (+A2:2018)
- Manufactured to BS EN ISO 9001:2015 and BS EN ISO 14001:2015
- Complies with all relevant sections of the Building Regulations 2010
- Satisfies all relevant NHBC requirements

#### Compatibility

Natural or Synthetic slates from all major manufacturers in smaller sizes such as:

- 400 x 250mm
- 400 x 225mm
- 400 x 200mm
- 350 x 250mm
- 350 x 200mm
- 300 x 200mm

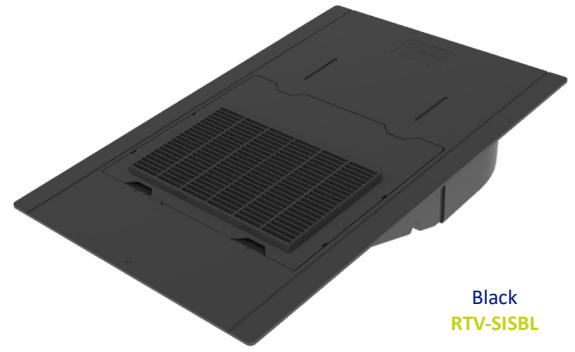
#### Material and Colour Choice

- Injection moulded Polypropylene with textured finish
- Available in Black

#### Product Codes

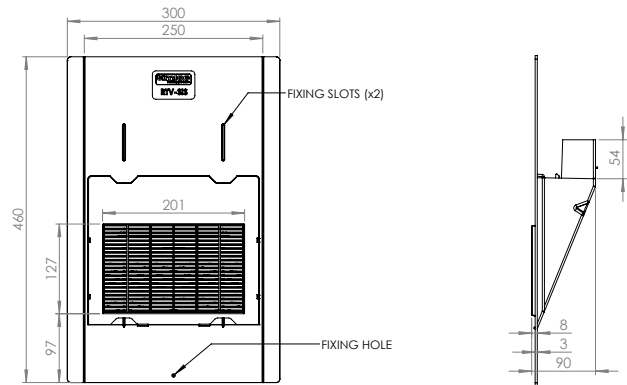
Product Description	Colour	Weight	Box Quantity	Product Code	Pack Quantity	Pack Code	Pallet Quantity
Small Inline Slate Vent	Black	0.64kg	1	RTV-SISBL	5	RTVMULTI-SISBL	120

**NB.** RTV-SISBL available in single, pack or pallet quantities. For pack quantities, 5 Small Inline Slate vent assemblies are packaged in one large box.



Black  
RTV-SISBL

#### Product Dimensions



Top Profile

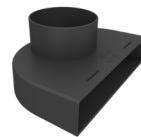
Side Profile

#### Airflow Test Data

RTV-SIS (100mm duct)	
Flow Rate l/s	Static pressure difference Pa
10	2
20	8
30	19
40	34

#### Accessories

- Full datasheets available for all accessories
- 110mm Flexi-Pipe (RTV-KIT1) to aid connection to ventilation duct or soil vent pipe
- Inline Slate adapter (RTV-ADIS) to attach the roof tile vent to 110mm ductwork
- Multi adapter (RTV-ADMULTI) to aid connected to 100/110/125/150mm duct sizes
- RTV-ADIS and RTV-KIT1 available as one kit (RTV-KIT4)



Inline Slate Adapter  
RTV-ADIS



Multi Adapter  
RTV-ADMULTI



110mm Flexi-Pipe  
RTV-KIT1